

## b-panel

b-panel® building system comprised of reinforced concrete panels, insulated with b-foam® Expanded Polystyrene (EPS) layer. This offers excellent thermal and acoustic insulation characteristics, superior earthquake resistance

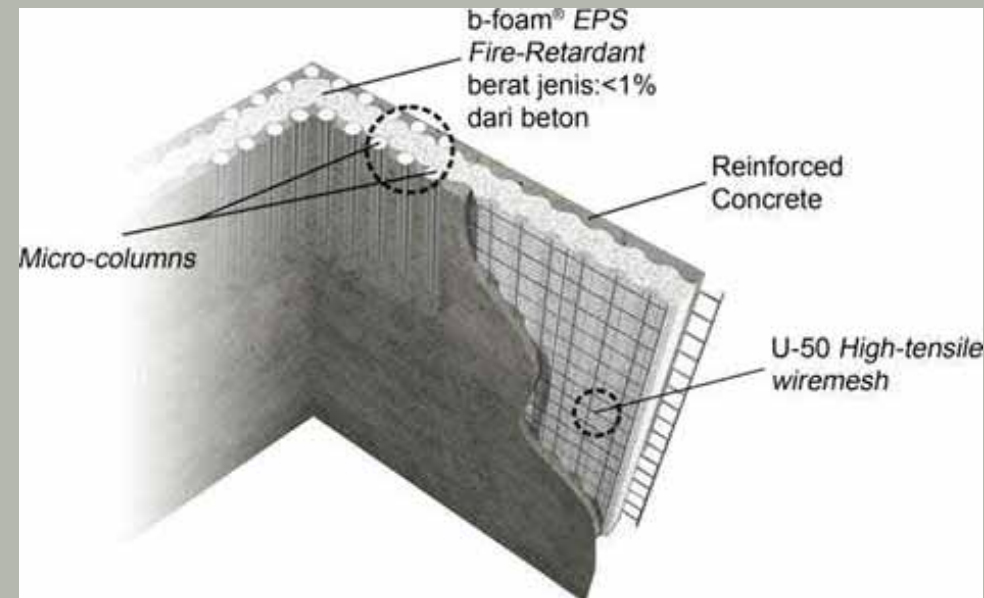
How the b-panel.

The ultra-light b-foam® EPS functions as formwork for the reinforced concrete during plastering, negating the needs for expensive and time-consuming formwork. As part of its semi-prefab installation process, concrete is applied continuously, resulting a monolithic, extremely rigid, lightweight shell. Permanently buried within the reinforced concrete sandwich, the b-foam® EPS layer forms an exceptional thermal and acoustic barrier.

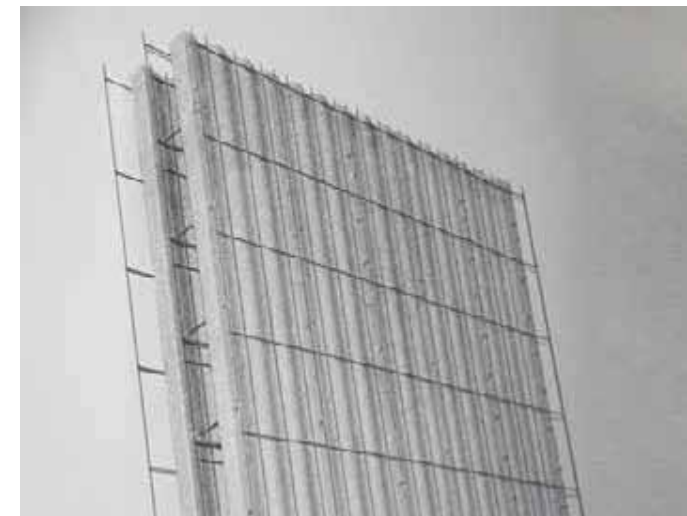
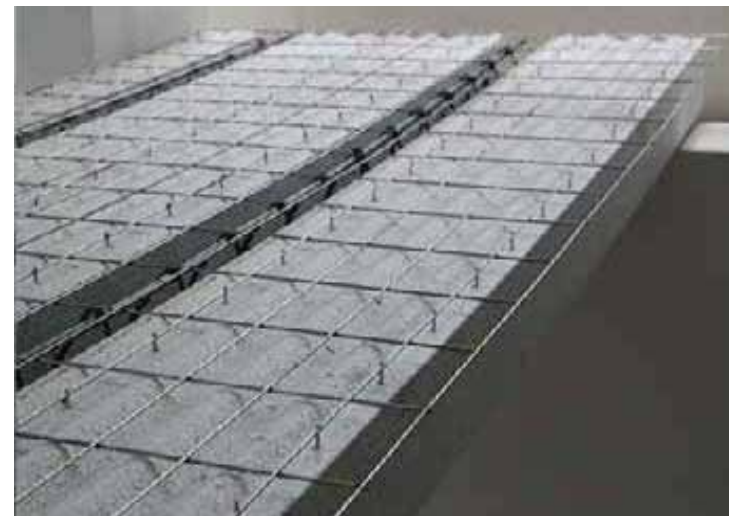
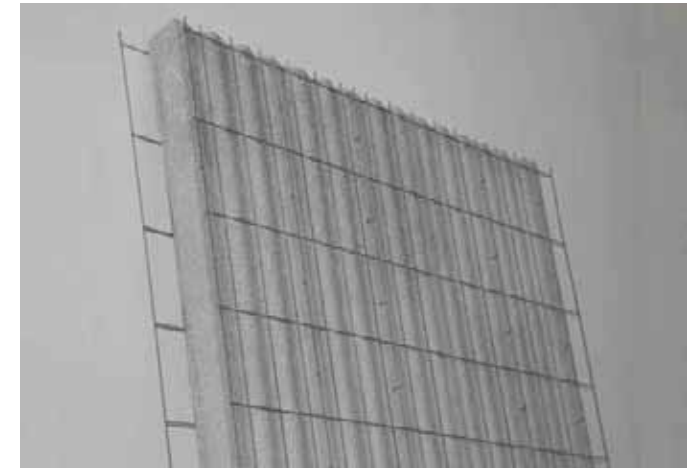


## Benefit b-panel

1. Superior insulation against heat and humidity
2. Acoustic barrier (STC 42 minimum)
3. Light-weight ( $\pm 100-130 \text{ kg/m}^2$  , FOR ALL WALL THICKNESSES)
4. Rigid – monolithic structure (all walls act as one unit), highly resistant against break-in and earthquake
5. Safe during fire – passed fire test at PUSLITBANGKIM, Cileunyi (120 minutes@1000°C)
6. Cost savings :
  - \* Modular cutting list, eliminates waste at project sites
  - \* Reduced A/C consumption up to 40%
7. Rapid installation with modular cutting list system
8. Environmentally responsible :
  - \* Reduced CO2 emission from A/C consumption
  - \* Mindful production process



## Product **b-panel**



## Project **b-panel**



De Latinos, tanggerang



Provence Parkland, jakarta



Kotabaru parahyangan, bandung

## b-Foam

### Ultralight Architechtural Facade



### Advantages :

- \* Very light, about 10kg / m<sup>2</sup> (less than 1/20 of conventional precast facade).
- \* Reduce the load of the building significantly and improve the robustness and security when the earthquake.
- \* Submitted already prepared paint finishing leveling compound.
- \* Installation is fast and does not rely on heavy equipment.

## Technical Specifications :

- Core : Fire Retardant (FR), CONSTRUCTION - GRADE EPS (Expanded Polystyrene) Foam  
Casing : Cementitious coating on look-stitch knitted, UV-resistant and Oxidation-Free mesh  
Finish : Special finish order



## b-Foam

### Floating Structures



Kafe Terapung Sungai Kahayan - Palangkaraya

### Advantages:

- \* Durable - nonporous, does not rot (chemically and dimensionally stable).
- \* High buoyancy factor
- \* Production of environmentally friendly - recycled blend, without CFC.

## Advantages :

- \* Durable - nonporous, does not rot (chemically and dimensionally stable)
- \* Special safety factor - do not leak or sink
- \* capacity high buoyancy
- \* Environmentally friendly products-recycled blend, without CFC

## Technical Specifications :

- \* RG Expanded Polystyrene
- \* Optional: CONSTRUCTION-GRADE FR (Fire-Retardant)
- \* Capacity floating gross 500, 880, and 1000 kg / m<sup>2</sup>
- \* Grant-Series Pontoon:
  - Casing: Flexible polymer - cementitious matrix filler on lock-stitch knitted, UV-resistant and Oxidation-Free Polymer mesh. (Optional: Marine-Grade Casing)
  - Positive-Lock grooves ensures adhesion with concrete casting top





## b-Foam

### EPS Geof foam Solution

#### Advantages :

- Very lightweight (density about 1/50 or only 2% of the land urugan), thereby reducing the decline and land sliding significantly.
- The power of a very high compression than its weight, so it can be used for heavy weight applications
- Durable first term serviceability very panjang. Tidak rot (non-biodegradeable) and not oxidized by air, water and other natural elements.
- Save time (cost-effective). Very light beam, thereby reducing the logistical constraints and improve the efficiency of equipment and manpower.
- Shape precision so easy to install. Instalasi not subject to weather conditions

## Technical Specification :

- Fire Retardant (FR), b-foam® Geofoam-Grade® (GG) EPS (Expanded Polystyrene)
- Tipe: EPS 12,15, 19, 22, dan 29
- Mengacu ke ASTM 06817-07 (US standard) atau Japan Industry Standard (JIS)



## **b-Foam**

### **EPS Geofoam Solution**

